

Combined Resource Assessments Map

Linking Lands and Communities in the Land-of-Sky Region



Which Lands are Valuable for Multiple Resources (Wildlife Habitat & Biodiversity, Water Quality, Farming & Forestry)?

Value of Multiple Resources



Note that 1 = Least Valuable

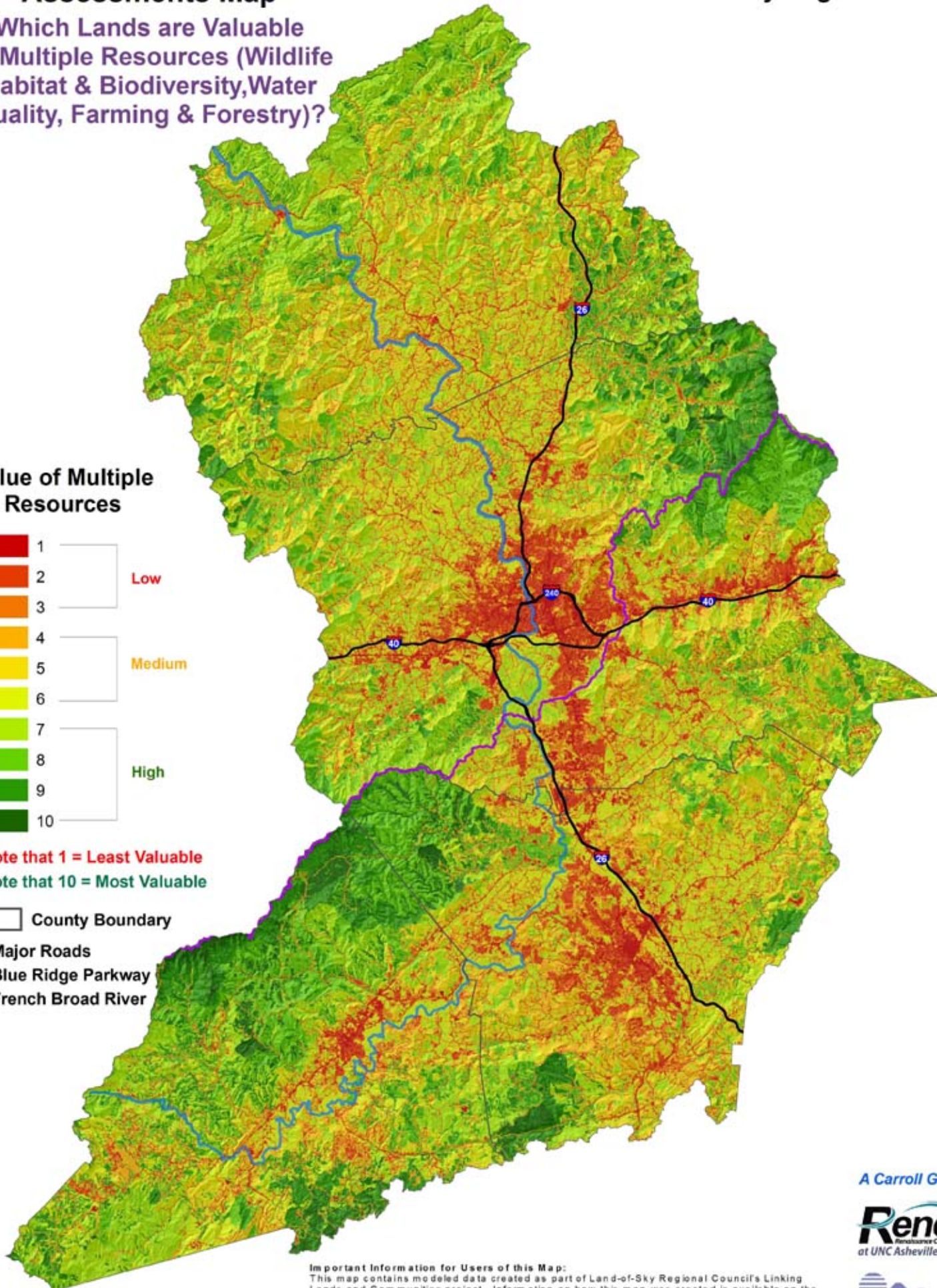
Note that 10 = Most Valuable

County Boundary

Major Roads

Blue Ridge Parkway

French Broad River



Important Information for Users of this Map:
 This map contains modeled data created as part of Land-of-Sky Regional Council's Linking Lands and Communities project. Information on how this map was created is available on the project website. To access this information, visit www.linkinglands.org and click on "Resource Assessments" in the left-hand menu. The web page for each assessment explains how the assessment model was created, and includes links to a fact sheet, conceptual model, data sources & definitions, ranking scheme and input data layers. LOSRC, RENCi and A Carroll GIS consider all of this information to be an integral part of this map, and essential to understanding what this map represents and how to interpret it properly.

A Carroll GIS

Renci
 The Regional Computing Institute
 at UNC Asheville



Land-of-Sky Regional Council
 Asheville • Hendersonville • Madison • Thompsons Creek • NC

Map Date: June 5th, 2010

Wildlife Habitat & Biodiversity Hubs Map

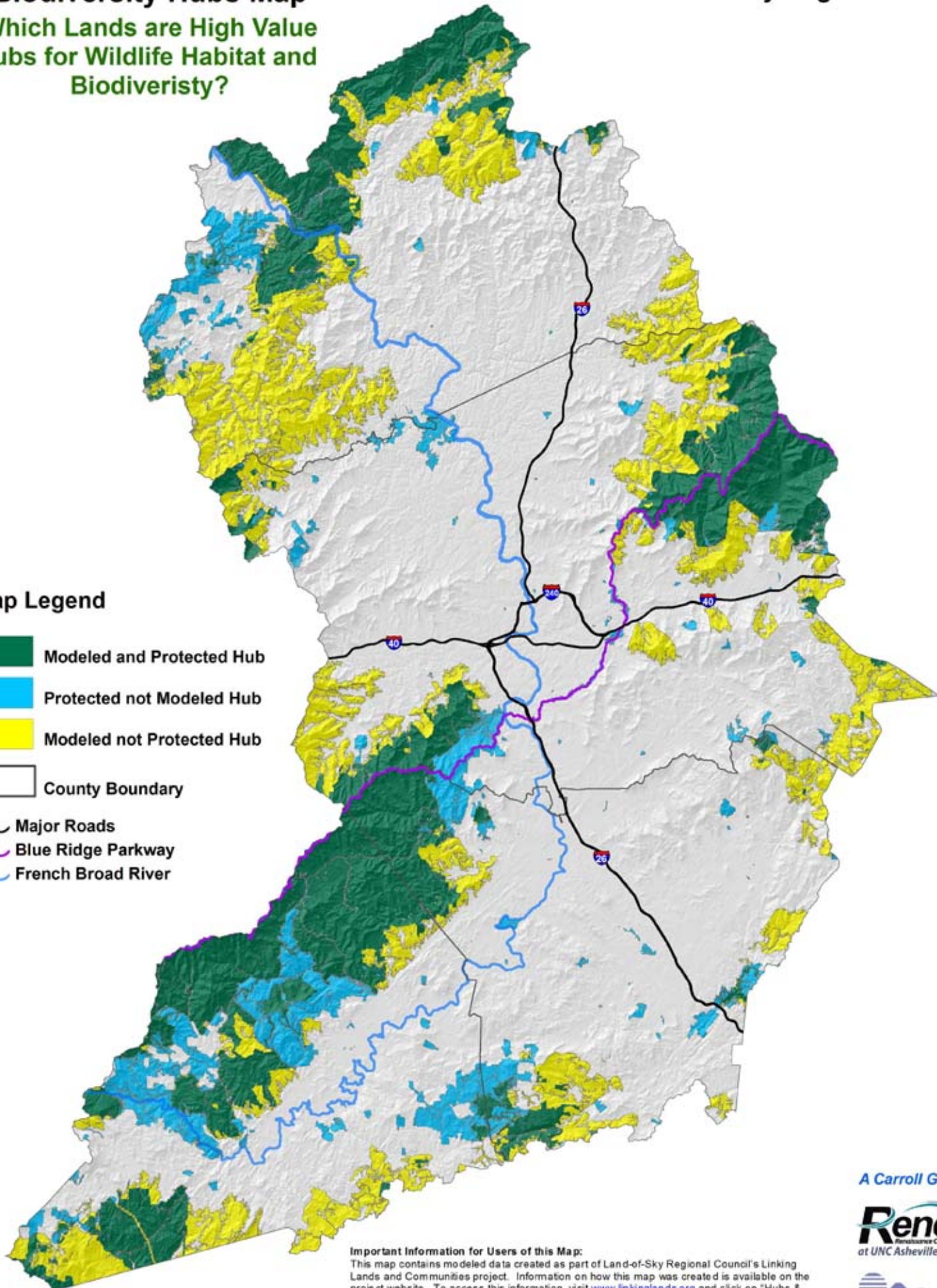
Which Lands are High Value Hubs for Wildlife Habitat and Biodiversity?

Linking Lands and Communities in the Land-of-Sky Region



Map Legend

-  Modeled and Protected Hub
-  Protected not Modeled Hub
-  Modeled not Protected Hub
-  County Boundary
-  Major Roads
-  Blue Ridge Parkway
-  French Broad River



0 5 10 Miles

Important information for Users of this Map:

This map contains modeled data created as part of Land-of-Sky Regional Council's Linking Lands and Communities project. Information on how this map was created is available on the project website. To access this information, visit www.linkinglands.org and click on "Hubs & Corridors" in the left-hand menu. The web page for each map explains how the hubs of the Green Infrastructure network were modeled, and how the links or corridors connecting the hubs were created. It includes links to technical documentation, [LOSRC](#), [RENCI](#) and [A Carroll GIS](#) consider all of this information to be an integral part of this map, and essential to understanding what this map represents, and how to interpret it properly.

A Carroll GIS

Renci
The National Center for
Geospatial Computing Institute
at UNC Asheville



Land-of-Sky Regional Council
Waynesville • Hendersonville • Madisonville • Thompsons Creek • NC

Map Date: June 5th, 2010

Water Quality Hubs Map

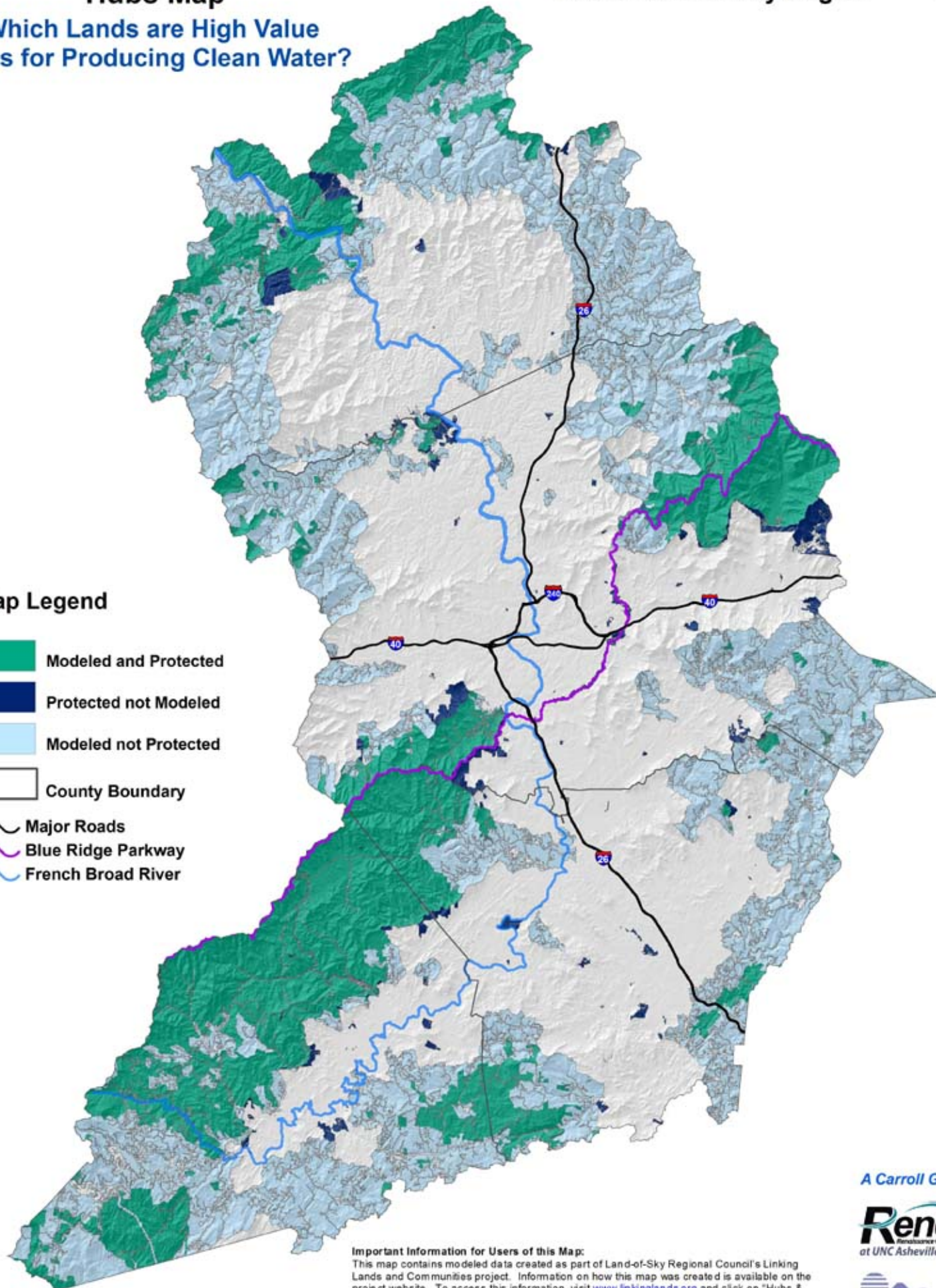
Linking Lands and Communities in the Land-of-Sky Region



Which Lands are High Value Hubs for Producing Clean Water?

Map Legend

- Modeled and Protected
- Protected not Modeled
- Modeled not Protected
- County Boundary
- Major Roads
- Blue Ridge Parkway
- French Broad River



Important information for Users of this Map:
This map contains modeled data created as part of Land-of-Sky Regional Council's Linking Lands and Communities project. Information on how this map was created is available on the project website. To access this information, visit www.linkinglands.org and click on "Hubs & Corridors" in the left-hand menu. The web page for each map explains how the hubs of the Green Infrastructure network were modeled, and how the links or corridors connecting the hubs were created. It includes links to technical documentation, [LOSRC](#), [RENCI](#) and [A Carroll GIS](#) consider all of this information to be an integral part of this map, and essential to understanding what this map represents, and how to interpret it properly.

A Carroll GIS

Renci
The Environmental Computing Institute
at UNC Asheville



Land-of-Sky Regional Council
Waynesville • Hendersonville • Madisonville • Thompsons Creek • NC

Map Date: June 5th, 2010


Agricultural Hubs Map

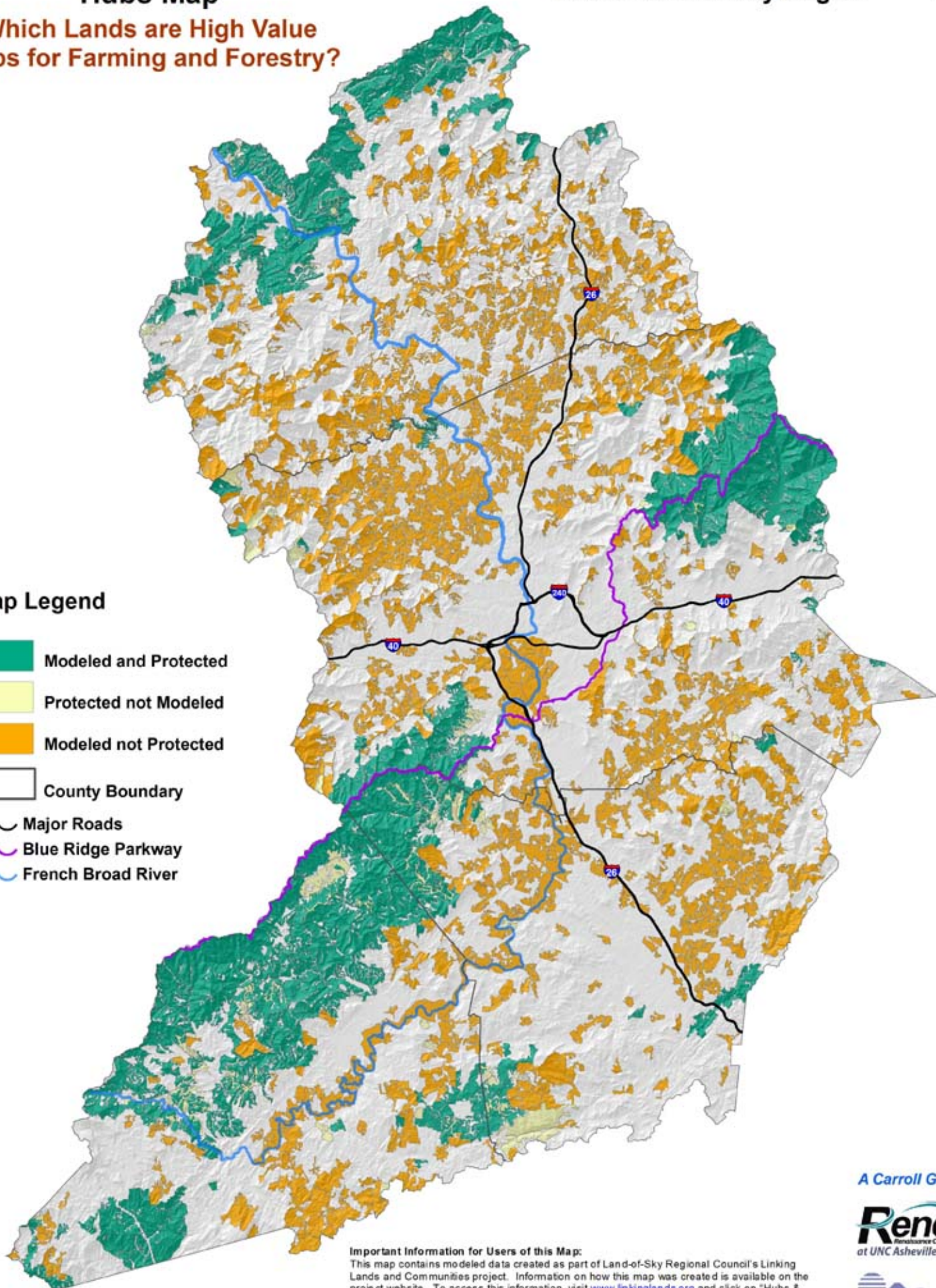
Linking Lands and Communities in the Land-of-Sky Region



Which Lands are High Value Hubs for Farming and Forestry?

Map Legend

-  Modeled and Protected
-  Protected not Modeled
-  Modeled not Protected
-  County Boundary
-  Major Roads
-  Blue Ridge Parkway
-  French Broad River



0 5 10 Miles

Important information for Users of this Map:
This map contains modeled data created as part of Land-of-Sky Regional Council's Linking Lands and Communities project. Information on how this map was created is available on the project website. To access this information, visit www.linkinglands.org and click on "Hubs & Corridors" in the left-hand menu. The web page for each map explains how the hubs of the Green Infrastructure network were modeled, and how the links or corridors connecting the hubs were created. It includes links to technical documentation, [LOSRC, Renci](#) and [A Carroll GIS](#) consider all of this information to be an integral part of this map, and essential to understanding what this map represents, and how to interpret it properly.

A Carroll GIS

Renci
The National Center for
Geospatial Computing Institute
at UNC Asheville


Land-of-Sky Regional Council
Waynesville • Hendersonville • Madisonville • Thompson's Cove • Cherokee NC

Map Date: June 5th, 2010

Green Infrastructure Network (Wildlife Habitat and Biodiversity Hubs)

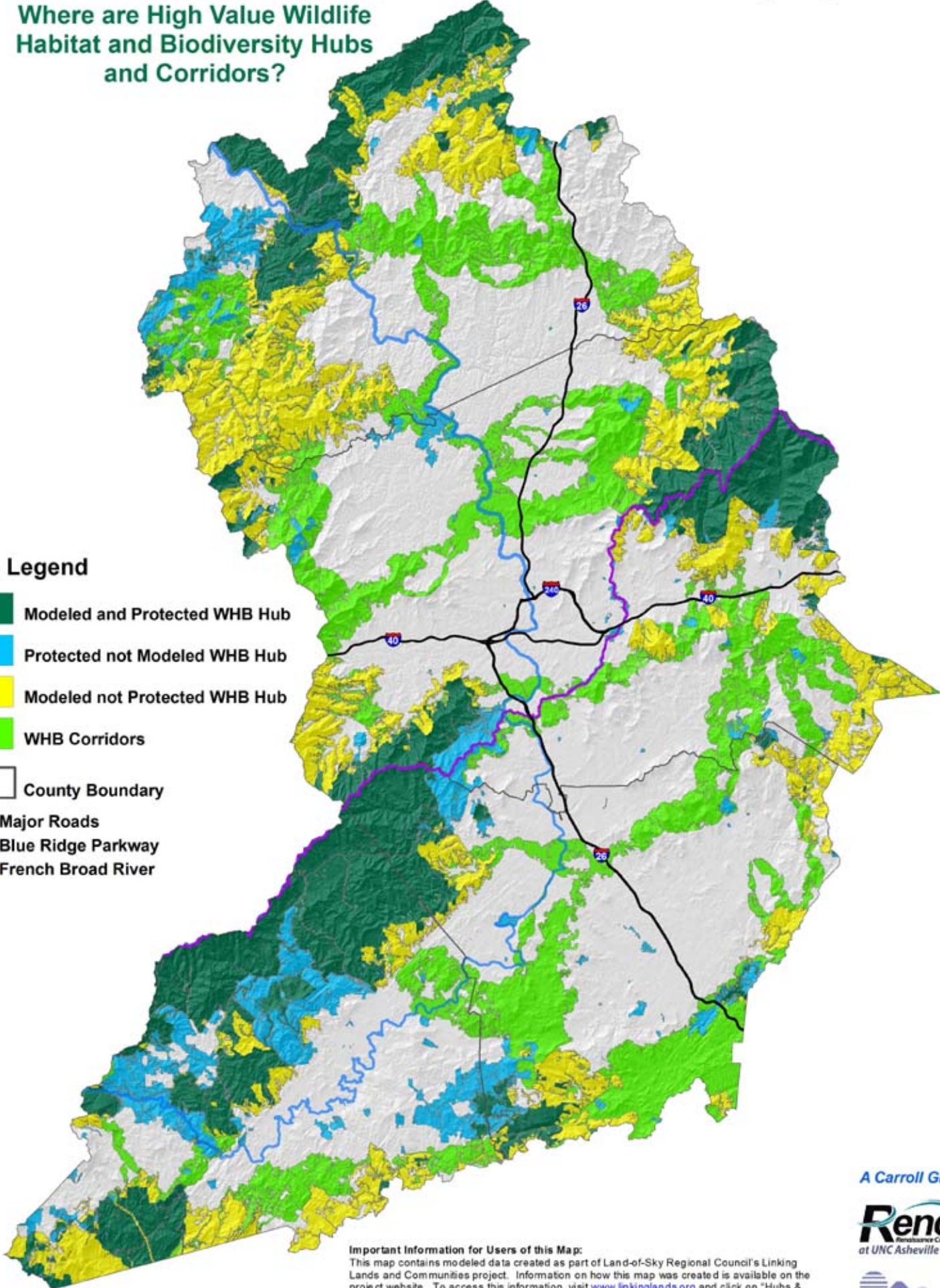
Linking Lands and Communities in the Land-of-Sky Region



Where are High Value Wildlife
Habitat and Biodiversity Hubs
and Corridors?

Map Legend

- Modeled and Protected WHB Hub
- Protected not Modeled WHB Hub
- Modeled not Protected WHB Hub
- WHB Corridors
- County Boundary
- Major Roads
- Blue Ridge Parkway
- French Broad River



Important Information for Users of this Map:
 This map contains modeled data created as part of Land-of-Sky Regional Council's Linking Lands and Communities project. Information on how this map was created is available on the project website. To access this information, visit www.linkinglands.org and click on "Hubs & Corridors" in the left-hand menu. The web page for each map explains how the hubs of the Green Infrastructure network were modeled, and how the links or corridors connecting the hubs were created. It includes links to technical documentation, [LOSRC](#), [RENCI](#) and [A Carroll GIS](#) consider all of this information to be an integral part of this map, and essential to understanding what this map represents, and how to interpret it properly.

A Carroll GIS



Combined Resource Hubs Map

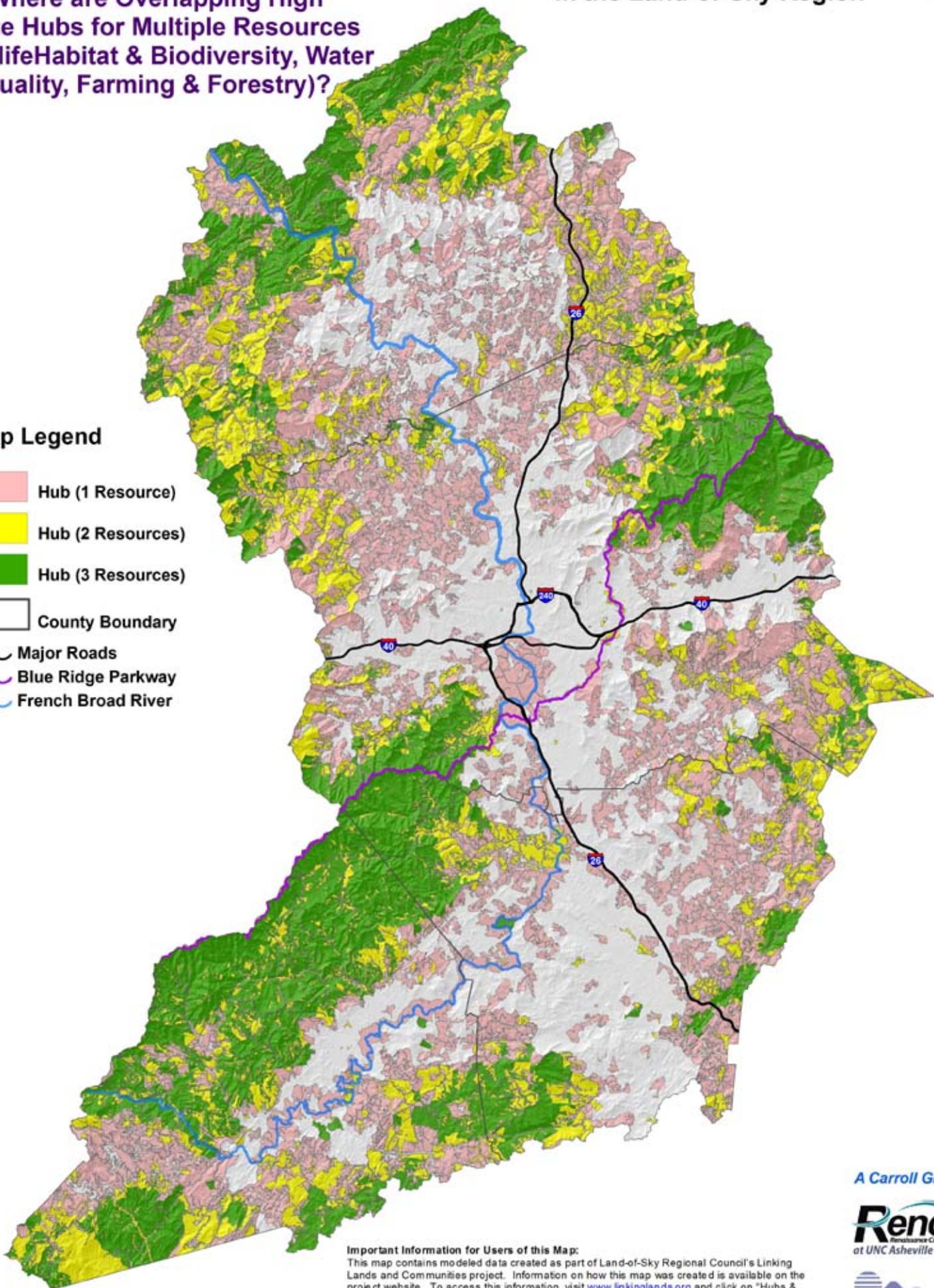
Linking Lands and Communities in the Land-of-Sky Region



Where are Overlapping High Value Hubs for Multiple Resources (WildlifeHabitat & Biodiversity, Water Quality, Farming & Forestry)?

Map Legend

-  Hub (1 Resource)
-  Hub (2 Resources)
-  Hub (3 Resources)
-  County Boundary
-  Major Roads
-  Blue Ridge Parkway
-  French Broad River



Important Information for Users of this Map:
This map contains modeled data created as part of Land-of-Sky Regional Council's Linking Lands and Communities project. Information on how this map was created is available on the project website. To access this information, visit www.linkinglands.org and click on "Hubs & Corridors" in the left-hand menu. The web page for each map explains how the hubs of the Green Infrastructure network were modeled, and how the links or corridors connecting the hubs were created. It includes links to technical documentation, [LOSRC](#), [RENCI](#) and [A Carroll GIS](#) consider all of this information to be an integral part of this map, and essential to understanding what this map represents, and how to interpret it properly.

A Carroll GIS



Green Infrastructure Network (Combined Resource Hubs)

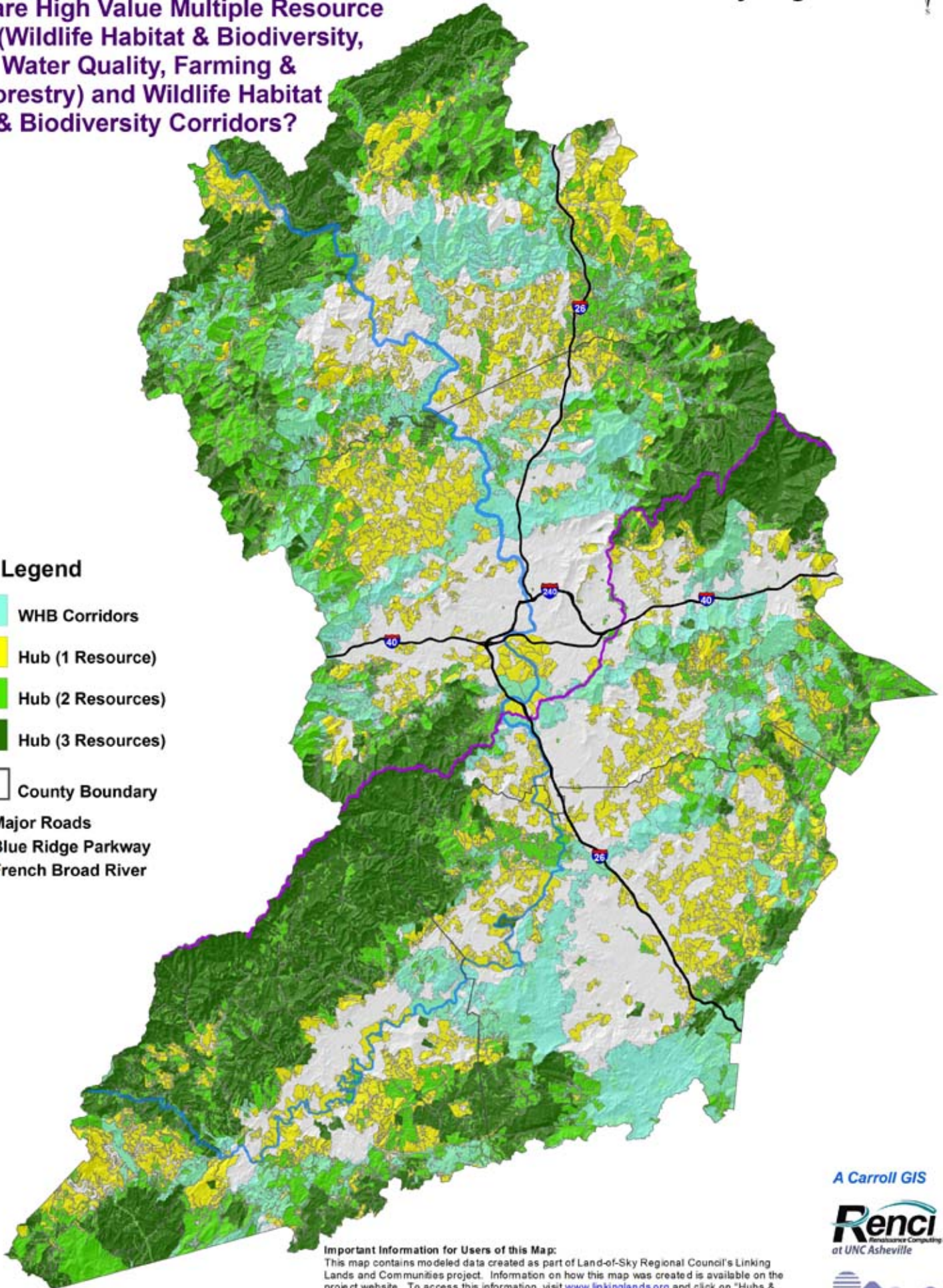
Linking Lands and Communities in the Land-of-Sky Region



Where are High Value Multiple Resource Hubs (Wildlife Habitat & Biodiversity, Water Quality, Farming & Forestry) and Wildlife Habitat & Biodiversity Corridors?

Map Legend

-  WHB Corridors
-  Hub (1 Resource)
-  Hub (2 Resources)
-  Hub (3 Resources)
-  County Boundary
-  Major Roads
-  Blue Ridge Parkway
-  French Broad River



0 5 10 Miles

Important Information for Users of this Map:

This map contains modeled data created as part of Land-of-Sky Regional Council's Linking Lands and Communities project. Information on how this map was created is available on the project website. To access this information, visit www.linkinglands.org and click on "Hubs & Corridors" in the left-hand menu. The web page for each map explains how the hubs of the Green Infrastructure network were modeled, and how the links or corridors connecting the hubs were created. It includes links to technical documentation, [LOSRC, RENCi](#) and [A Carroll GIS](#) consider all of this information to be an integral part of this map, and essential to understanding what this map represents, and how to interpret it properly.

A Carroll GIS

REnci
Regional Environmental
Computing Institute
at UNC Asheville



Land-of-Sky Regional Council
Waynesville • Hendersonville • Madisonville • Thompsons Creek • NC

Map Date: June 17th, 2010